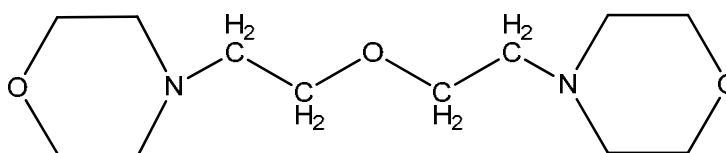


Bacterial reverse mutation test (OECD TG471)-Data sheet-Japan Bioassay Research Center
fiscal 2009

The data sheet was reviewed and created by Hazard-Data Evaluation Committee of National Institute of Technology and Evaluation in fiscal year 2011 based on the study report obtained by Ministry of Economy, Trade and Industry.

Test substance

MITI No.	: 5-6265
CAS No.	: 6425-39-4
Chemical name	: Bis(2-morpholinoethyl) ether
Synonym	: 4,4'-(3-oxapentane-1,5-diyl)bismorpholine
Molecular weight	: 244.33
Molecular formula	: $C_{12}H_{24}N_2O_3$
Structural formula	:



Appearance	: Reddish yellow transparent liquid
Solubility	: Soluble in water
Purity	: 94.8%

Experimental Method

Strains of bacteria	: <i>Salmonella typhimurium</i> TA100, TA1535, TA98, TA1537 <i>Escherichia coli</i> WP2uvrA/pKM101
Procedure	: Pre-incubation method
Vehicle	: Distilled water (for HPLC) (dissolved)
Dosage	: -S9; 2.29 - 5000 μ g/plate +S9; 2.29 - 5000 μ g/plate
Evaluation criteria	: Revertant frequency (increase 2 times or more compared with vehicle control), reproducibility and dose-response relationship were taken into account.

Result

Negative

Note