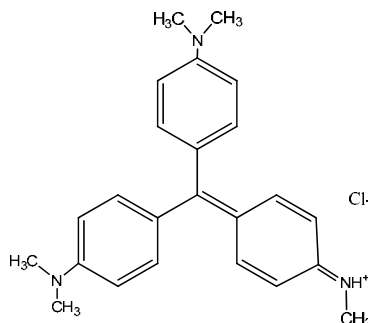


**Bacterial reverse mutation test (OECD TG471)-Data sheet-**Shin Nippon Biomedical Laboratories, Ltd.  
fiscal 2009

The data sheet was reviewed and created by Hazard-Data Evaluation Committee of National Institute of Technology and Evaluation in fiscal year 2011 based on the study report obtained by Ministry of Economy, Trade and Industry.

**Test substance**

MITI No. : 5-1969  
 CAS No. : 8004-87-3  
**Chemical name** : C.I. Basic Violet 1  
 Molecular weight : 393.95  
 Molecular formula :  $C_{24}H_{28}ClN_3$   
 Structural formula :



Appearance : Dark yellow-green to dark green crystal(nub)  
 Solubility : Soluble in ethanol and chloroform, slightly soluble in glycerin, insoluble in ethyl ether  
 Purity : Unknown

**Experimental Method**

Strains of bacteria : *Salmonella typhimurium* TA100, TA1535, TA98, TA1537  
*Escherichia coli* WP2uvrA  
 Procedure : Preincubation method  
 Vehicle : DMSO (dissolved)  
 Dosage : -S9; 0.246 - 5000 µg/plate  
           +S9; 0.614 - 5000 µg/plate  
 Evaluation criteria : Revertant frequency (increase 2 times or more compared with vehicle control), reproducibility and dose-response relationship were taken into account.

**Result**

## Positive

-S9: WP2uvrA, TA1537

+S9: TA98, TA1537

Maximum specific activity: 46.400 rev/mg (-S9, WP2uvrA, 0.000625 mg/mL)

---

**Note**