

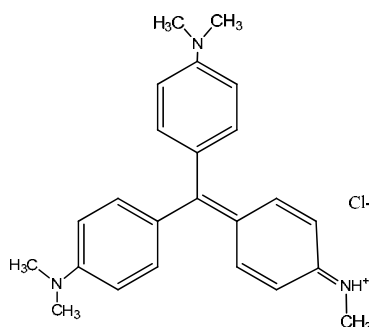
Acute Oral Toxicity-Acute toxic class method(OECD TG423) -Data Sheet-

Shin Nippon Biomedical Laboratories, Ltd.
fiscal 2009

The data sheet was reviewed and created by Hazard-Data Evaluation Committee of National Institute of Technology and Evaluation in fiscal year 2011 based on the study report obtained by Ministry of Economy, Trade and Industry.

Test substance

MITI No. : 5-1969
CAS No. : 8004-87-3
Chemical name : C.I. Basic Violet 1
Molecular weight : 393.95
Molecular formula : $C_{24}H_{28}ClN_3$
Structural formula :



Appearance : Dark yellow-green to dark green crystal (nub)
Solubility : Soluble in ethanol and chloroform, slightly soluble in glycerin, insoluble in ethyl ether
Purity : Unknown

Experimental Method

Test animal : CrI:CD (SD) female rats, 9 weeks old (at dosing)
Number of animals : 3 rats/group
Administration : Oral gavage (Starved from p.m.5 of the day before dosing to 6 hours after dosing)
Vehicle : 0.5%w/v methylcellulose aqueous solution (suspended)
Dosing volume : 10 mL/kg
Dose level : 300→ 300→ 2000 mg/kg
Observation period : 14 days

Results

Dose (mg/kg)	300 (twice)	2000
Mortality	0/6	3/3
Days found dead	-	2 to 9 days after treatment
Clinical signs	Mucus stool, soft stool, colored stool, colored urine, decrease in stool volume, no stool	Salivation, mucus stool, soft stool, colored stool (violet), colored urine (violet), soiled perineal region, decrease in stool volume, no stool, decrease in spontaneous activity, lacrimation, emaciation
Body weight	Slightly decrease (day 4)	Decrease(day 4)
Necropsy	-	Violet discoloration of organs and tissues in all over the body (3/3), dilatation of stomach(3/3), small sizes of spleen (3/3) and thymus(2/3), enlargement of adrenal (2/3), black focus in lung (1/3)
Histopathology	-	<p>Stomach: erosion of glandular mucosa(3/3), inflammatory cell infiltration of lamina propria (3/3), hypertrophy of epithelial cell in the glandular stomach (2/3),</p> <p>Duodenum: erosion of mucosa (3/3)</p> <p>Intestines: hypertrophy of epithelial cell / inflammatory cell infiltration of lamina propria (3/3), congestion(3/3) /hemorrhage (3/3)/fibrin thrombus of submucosa(1/3)</p> <p>Liver: enlargement of centrilobular hepatocyte (3/3), necrosis(1/3)/ vacuolation (1/3) of periportal hepatocyte /</p> <p>Adrenal: hypertrophy of zona</p>

		fasciculata (2/2) Spleen: atrophy of follicle /marginal zone /periarterial lymphatic sheath (3/3) Thymus: atrophy(2/2) / necrosis of lymphocyte (1/2) Lung: congestion(1/1)
Cause of death	unknown	
GHS classification	Category 4	
LD50 Value	>300 - 2000 mg/kg ¹⁾	

Note

1) According to the maker's MSDS, an oral LD50 value of the compound was 413 mg/kg in rats.