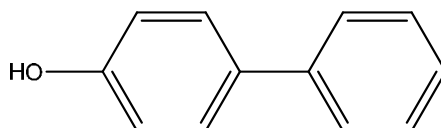


Bacterial reverse mutation test (OECD TG471)-Data sheet-Japan Bioassay Research Center
fiscal 2009

The data sheet was reviewed and created by Hazard-Data Evaluation Committee of National Institute of Technology and Evaluation in fiscal year 2011 based on the study report obtained by Ministry of Economy, Trade and Industry.

Test substance

MITI No. : 4-19
CAS No. : 92-69-3
Chemical name : p-Phenylphenol
Synonym : 4- Phenylphenol
Molecular weight : 170.21
Molecular formula : C₁₂H₁₀O
Structural formula :



Appearance : White crystalline powder
Solubility : in water; 0.038 mg/mL、 in DMSO; >=100 mg/mL
Purity : 99.9%

Experimental Method

Strains of bacteria : *Salmonella typhimurium* TA100, TA1535, TA98, TA1537
Escherichia coli WP2uvrA/pKM101
Procedure : Preincubation method
Vehicle : DMSO (dissolved)
Dosage : -S9; 2.29 - 5000µg/plate
 +S9; 2.29 - 5000µg/plate
Evaluation criteria : Revertant frequency (increase 2 times or more compared with vehicle control), reproducibility and dose-response relationship were taken into account.

Results

Negative

Note